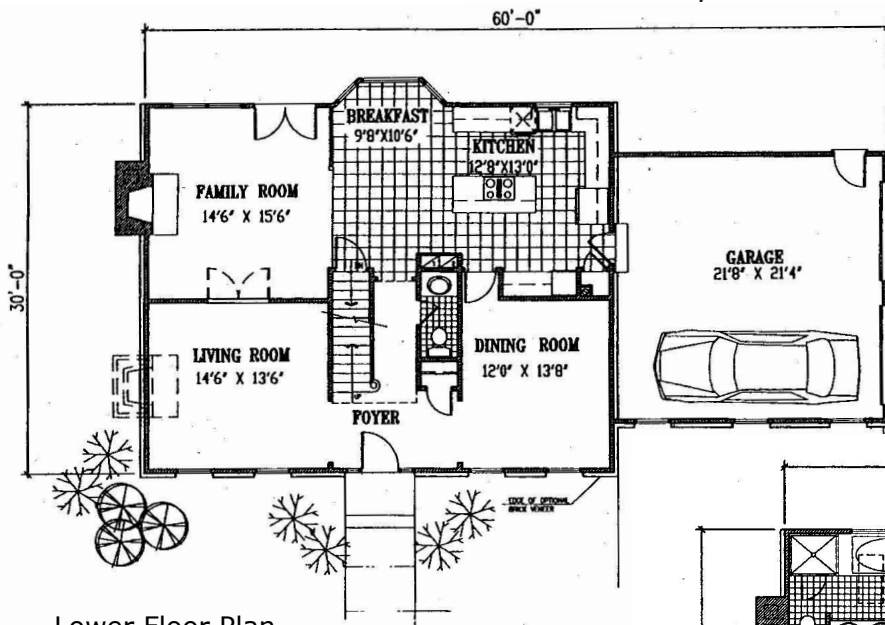
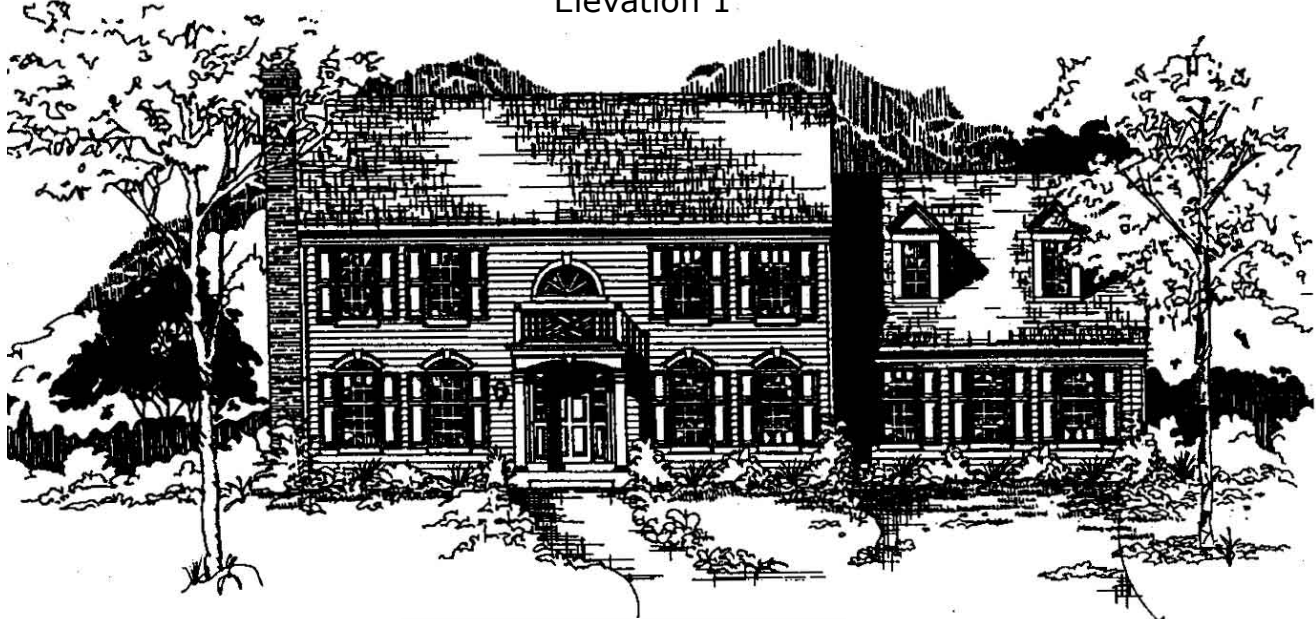
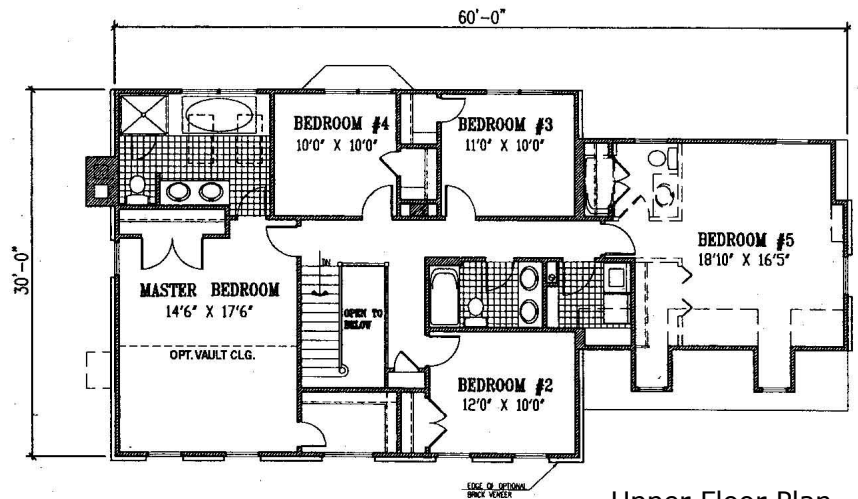


The Chelsea

Elevation 1



Lower Floor Plan
Ceiling 9'



Upper Floor Plan
Ceiling 9'

Total Square Footage: 2645 s.f.

Floor plan shown may demonstrate optional features which may be available. Salesperson will assist you with standard and optional features.



GRAYSTONE HOMES
www.graystonehomesinc.net

© 2004 Graystone Homes, Inc. All rights reserved. Do not reproduce without permission.

